

# LINE STRAINERS

## Banjo 1/2" TO 1-1/4" Poly Strainer Parts

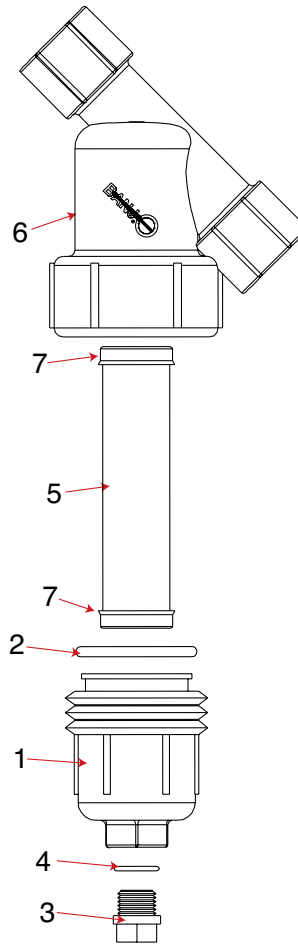
### REPLACEMENT PARTS 1/2"-3/4" Y STRAINERS

ITEM	PART NO	DESCRIPTION
1	LS075-C1*	1/2"-3/4" End Cap
2	LS075-G	1/2"-3/4" O-Ring
2	LS075-GV	1/2"-3/4" FKM (viton type) Gasket
3	12723	1/4" Drain Plug (Fits 1/2"-3/4")
4	12724	1/2"-3/4" EPDM O-Ring for Drain Plug
5	LS720	1/2"-3/4" 20 Mesh Screen
5	LS740	1/2"-3/4" 40 Mesh Screen
5	LS780	1/2"-3/4" 80 Mesh Screen
6	LS050-B	1/2" Y Body
6	LS075-B	3/4" Y Body
N/A	LS050B/C1	1/2" Y Body, Cap & Gasket
N/A	LS075B/C1	3/4" Y Body, Cap & Gasket

### REPLACEMENT PARTS 1"-1 1/4" Y STRAINERS

ITEM	PART NO	DESCRIPTION
1	LS100-C1*	1"-1 1/4" End Cap
2	LS100-G	1"-1 1/4" O-Ring
2	LS100-GV	1"-1 1/4" FKM (viton type) Gasket
3	12777	1/2" Drain Plug (Fits 1"-1 1/4")
4	UV15163	1"-1 1/4" EPDM O-Ring for Drain Plug
4	UV15163V	1"-1 1/4" FKM (viton type) O-Ring for Drain Plug
5	LS120	1"-1 1/4" 20 Mesh Screen
5	LS140	1"-1 1/4" 40 Mesh Screen
5	LS180	1"-1 1/4" 80 Mesh Screen
6	LS100-B	1" Y Body
6	LS125-B	1 1/4" Y Body
7	LS125G	1"-1 1/4" EPDM O-Ring
N/A	LS100B/C1	1" Y Body, Cap & Gasket
N/A	LS125B/C1	1 1/4" Y Body, Cap & Gasket

**NOTE:** Items marked with asterisk\* come with parts 1, 3, and 4.



SCREENS	
MESH SIZE	RIB COLOR
6 MESH	WHITE
12 MESH	BLACK
20 MESH	BEIGE
30 MESH	YELLOW
40 MESH	BROWN
50 MESH	RED
80 MESH	BLUE
100 MESH	GREEN
120 MESH	BLACK



1" 80 Mesh

### STANDARD MESHES & DATA (FOR GENERAL USE ONLY)

MESH	MICRONS	WIRE DIAMETER	OPENING	% OPEN AREA
6 Mesh	3360	.035	.132	62.7
8 Mesh	2380	.028	.097	60.2
12 Mesh	1680	.023	.060	51.8
16 Mesh	1190	.018	.044	50.7
20 Mesh	841	.016	.034	46.2
30 Mesh	595	.012	.021	40.8
40 Mesh	400	.012	.021	36.0
50 Mesh	297	.009	.011	30.3
80 Mesh	177	.0055	.007	31.4
100 Mesh	149	.0045	.005	30.3
120 Mesh	125	.0037	.0046	30.5